

The logo for PiroPro features a stylized flame icon in shades of orange and red to the left of the text. The word "Piro" is written in a bold, red, sans-serif font, and "Pro" is written in a bold, dark grey, sans-serif font.

# PiroPro

BRANDWERENDE PLEISTERS | PLÂTRES ANTI-FEU

---

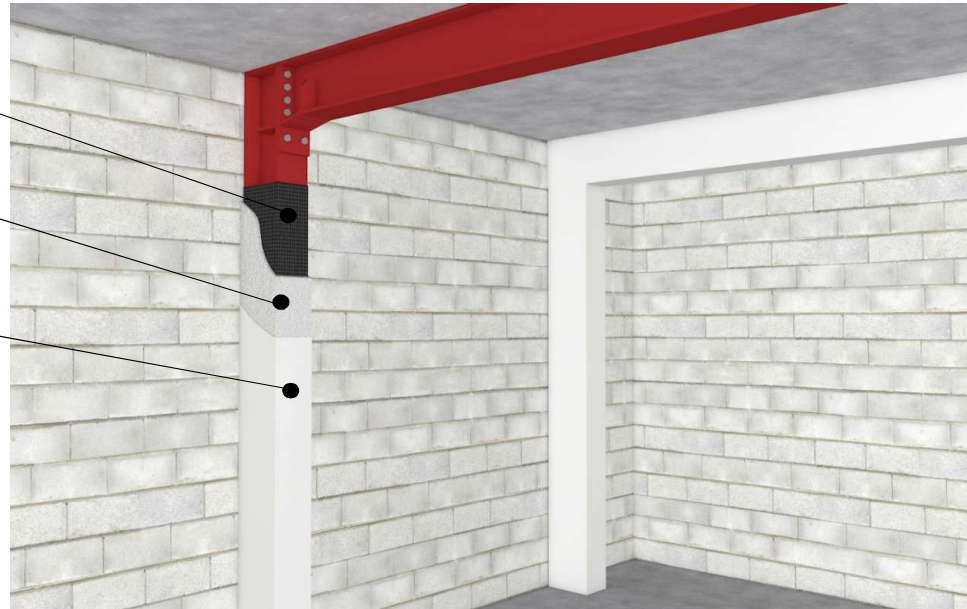
---

# Brandwerende bescherming staal

Strekmetaal  
(grip-latt)

Piro-S/G02

Schilderklare  
afwerking



# Brandwerende bescherming staal

Op stalen profielen omwikkeld met grip-latt :

- REI 60 : dikte min. 20mm
- REI 120 : dikte min. 35mm



# Brandwerende bescherming beton



Piro-C/G02

Schilderklare  
afwerking



# Brandwerende bescherming beton

Op vloeren en plafonds in beton:

- REI 60/120 : dikte min. 8mm

Op kolommen en balken in beton:

- REI 60/120 : dikte min. 14mm

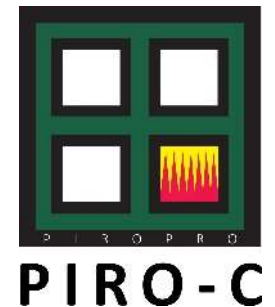


## Eigenschappen

Samenstelling:	vermiculiet, periet en gips
Brandweerstand:	REI 30 tem REI 240
Brandreactie:	Euroklasse A1
Warmtegeleidingscoëfficiënt:	$\lambda$ 0,97 W/mK
Druksterkte:	$> 1$ N/mm <sup>2</sup>
Hechtsterkte 16 mm/3 maanden:	3,56 kgf/cm <sup>2</sup>
Volumieke massa:	670 kg/m <sup>3</sup>
Dikterange:	8 - 35 mm
Opmerking:	vezelvrij
Kleur:	wit

## Normen

Voor beton:	EN 13381-3
Voor staal:	EN 13381-4
Voor beton en staal:	NBN 713-020
Markering:	CE



## DECLARATION OF TEST RESULTS No. 18205D

Sprayed fire protective rendering for concrete building elements  
type: **Pirotherm G-02 = Piro-C** – protection thickness: 8 - 41 mm

All the obtained classifications and field of application of the protective rendering is fully described in classification reports Nos. 17850C (for concrete beams and columns) and 18205C (for concrete slabs and walls).

The equivalent thickness of concrete, related to thermal insulation criteria.

**Table 1** Equivalent concrete thickness for concrete beams and columns

		Equivalent concrete thickness (mm)					
d <sub>p</sub> (mm) protection thickness	Time	30 min	60 min	90 min	120 min	180 min	240 min
	d <sub>p(min)</sub> = 14		18	26	26	24	24
d <sub>p</sub> = 18		21	31	34	34	33	/
d <sub>p</sub> = 20		23	34	38	38	38	/
d <sub>p</sub> = 25		27	42	48	50	49	/
d <sub>p</sub> = 30		30	49	59	62	60	/
d <sub>p</sub> = 35		34	56	69	73	72	/
d <sub>p(max)</sub> = 41		39	65	81	87	85	80



Declaration of test results No. 18205D



**Table 2** Equivalent concrete thickness for concrete slabs and walls

Time $d_p$ (mm) protection thickness	Equivalent concrete thickness (mm)					
	30 min	60 min	90 min	120 min	180 min	240 min
$d_{p(min)} = 8$	33	41	42	42	41	/
$d_p = 9$	35	43	45	45	43	/
$d_p = 10$	37	46	48	48	46	/
$d_p = 11$	38	48	50	51	48	/
$d_p = 12$	40	20	53	54	51	/
$d_{p(max)} = 13$	42	52	56	57	54	48

PiroPro nv

Brechtsebaan 114b

B - 2900 Schoten

[www.piropro.be](http://www.piropro.be)

[info@piropro.be](mailto:info@piropro.be)

03 666 15 70

 **THIERS-HORIZON GROUP**